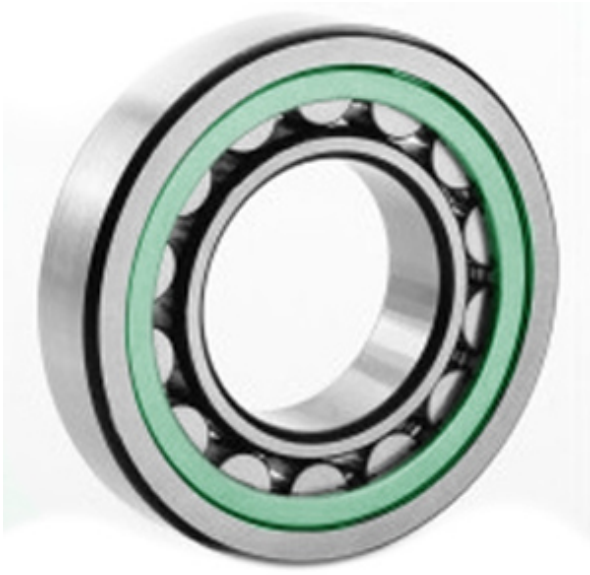




# NTK BEARING PRECISION AXLE CORP.



20210 T Bearing 2D drawings and 3D CAD models

1.969 Inch | 50 Millimeter x 3.543 Inch | 90 Millimeter x 0.787 Inch | 20 Millimeter  
CONSOLIDATED BEARING 20210 T Spherical Roller Bearings

Bearing No. 20210 T

Category	Spherical Roller Bearings
Inventory	0.0
Manufacturer Name	CONSOLIDATED BEARING
Minimum Buy Quantity	N/A
Weight	0.562
EAN	0644075155588
Product Group	B04311
Internal Clearance	C0-Medium
Mounting Method	Shaft Mount
Rolling Element	Spherical Roller Bearing
Bore Profile	Straight
Cage Material	Polymer
Enclosure	Open
Number of Rows of Rollers	Single Row
Relubricatable	No
Withdrawal Sleeve	Not Applicable
Withdrawal Nut	Not Applicable
Inch - Metric	Metric
Long Description	50MM Straight Bore; 90MM Outside Diameter; 20MM Width; C0-Medium Clearance; Shaft Mount; Single Row of Spherical Roller Bearings; Polymer Cage Material; Open



## NTK BEARING PRECISION AXLE CORP.

	Enclosure; Not Relubricatable
Category	Spherical Roller Bearing
UNSPSC	31171510
Harmonized Tariff Code	84823040
Noun	Bearing
Keyword String	Spherical
Manufacturer URL	<a href="http://www.consbrgs.com/">http://www.consbrgs.com/</a>
Weight / LBS	1.239
D	3.543 Inch   90 Millimeter
Adapter Part Number	Not Applicable Inch   Not Applicable Millimeter
B	0.787 Inch   20 Millimeter
d	1.969 Inch   50 Millimeter