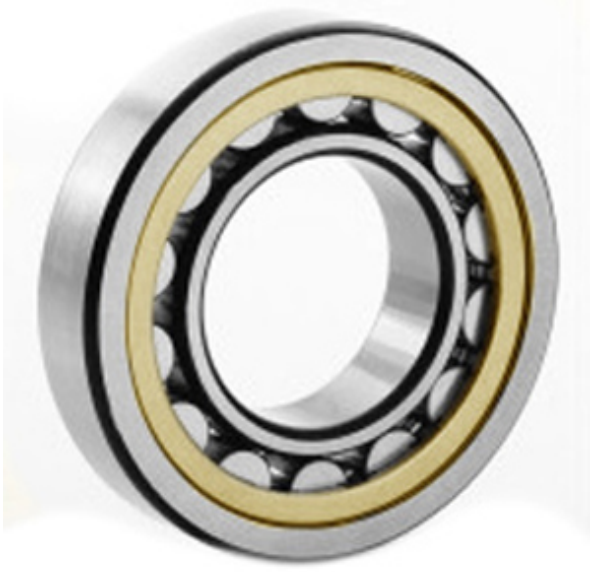




# NTK BEARING PRECISION AXLE CORP.



20220 M Bearing 2D drawings and 3D CAD models

3.937 Inch | 100 Millimeter x 7.087 Inch | 180 Millimeter x 1.339 Inch | 34 Millimeter  
CONSOLIDATED BEARING 20220 M Spherical Roller Bearings

Bearing No. 20220 M

|                           |  |
|---------------------------|--|
| Category                  | Spherical Roller Bearings  |
| Inventory                 | 0.0  |
| Manufacturer Name         | CONSOLIDATED BEARING   |
| Minimum Buy Quantity      | N/A  |
| Weight                    | 3.92   |
| EAN                       | 0644075155793  |
| Product Group             | B04311   |
| Internal Clearance        | C0-Medium  |
| Mounting Method           | Shaft Mount  |
| Rolling Element           | Spherical Roller Bearing   |
| Bore Profile              | Straight   |
| Cage Material             | Bronze   |
| Enclosure                 | Open   |
| Number of Rows of Rollers | Single Row   |
| Relubricatable            | No   |
| Withdrawal Sleeve         | Not Applicable   |
| Withdrawal Nut            | Not Applicable   |
| Inch - Metric             | Metric   |
| Long Description          | 100MM Straight Bore; 180MM Outside Diameter; 34MM Width; C0-Medium Clearance; Shaft Mount; Single Row of Spherical Roller Bearings; Bronze Cage Material; Open |



## NTK BEARING PRECISION AXLE CORP.

|                        |   |
|------------------------|---|
|                        | Enclosure; Not Relubricatable                                   |
| Category               | Spherical Roller Bearing  |
| UNSPSC                 | 31171510  |
| Harmonized Tariff Code | 84823040  |
| Noun                   | Bearing   |
| Keyword String         | Spherical   |
| Manufacturer URL       | <a href="http://www.consbrgs.com/">http://www.consbrgs.com/</a> |
| Weight / LBS           | 8.642   |
| D                      | 7.087 Inch   180 Millimeter                                     |
| B                      | 1.339 Inch   34 Millimeter                                      |
| d                      | 3.937 Inch   100 Millimeter                                     |
| Adapter Part Number    | Not Applicable Inch   Not Applicable Millimeter                 |