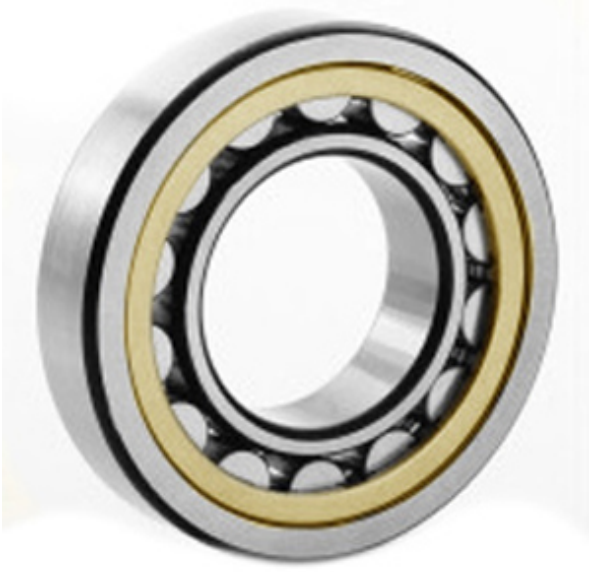




# NTK BEARING PRECISION AXLE CORP.



20218-KM Bearing 2D drawings and 3D CAD models

3.543 Inch | 90 Millimeter x 6.299 Inch | 160  
Millimeter x 1.181 Inch | 30 Millimeter  
**CONSOLIDATED BEARING 20218-KM**  
Spherical Roller Bearings

Bearing No. 20218-KM

Category	Spherical Roller Bearings
Inventory	0.0
Manufacturer Name	CONSOLIDATED BEARING
Minimum Buy Quantity	N/A
Weight	2.63
EAN	0644075156301
Product Group	B04311
Internal Clearance	C0-Medium
Mounting Method	Adapter Mount
Rolling Element	Spherical Roller Bearing
Bore Profile	Tapered
Cage Material	Bronze
Enclosure	Open
Number of Rows of Rollers	Single Row
Relubricatable	No
Adapter Part Number - Millimeter	H218 (Specify bore)
Inch - Metric	Metric
Long Description	90MM Tapered Bore; 160MM Outside Diameter; 30MM Width; C0-Medium Clearance; Adapter Mount; Single Row of Spherical Roller Bearings; Bronze Cage Material; Open Enclosure; Not



## NTK BEARING PRECISION AXLE CORP.

	Relubricatable; Adapter Pa
Other Features	Order adapter or withdrawal sleeve or nut separately. Others may be available
Category	Spherical Roller Bearing
UNSPSC	31171510
Harmonized Tariff Code	84823040
Noun	Bearing
Keyword String	Spherical
Manufacturer URL	<a href="http://www.consbrgs.com/">http://www.consbrgs.com/</a>
Weight / LBS	5.798
B	1.181 Inch   30 Millimeter
d	3.543 Inch   90 Millimeter
D	6.299 Inch   160 Millimeter