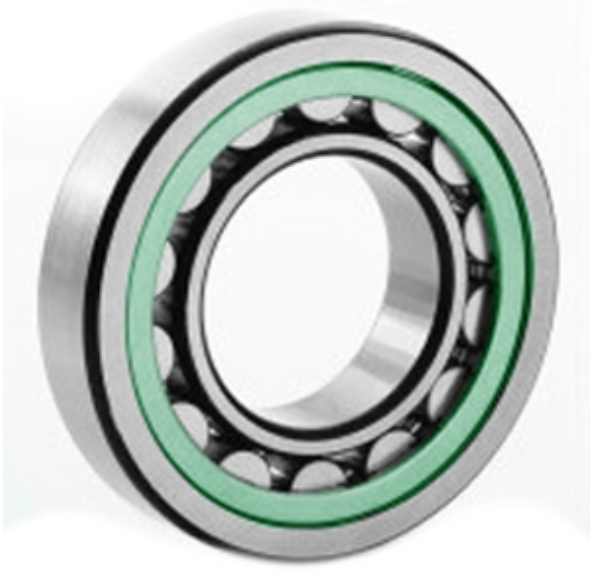




NTK BEARING PRECISION AXLE CORP.



20216 T Bearing 2D drawings and 3D CAD models

3.15 Inch | 80 Millimeter x 5.512 Inch | 140 Millimeter x 1.024 Inch | 26 Millimeter
CONSOLIDATED BEARING 20216 T Spherical Roller Bearings

Bearing No. 20216 T

| | |
|---------------------------|--|
| Category | Spherical Roller Bearings |
| Inventory | 0.0 |
| Manufacturer Name | CONSOLIDATED BEARING |
| Minimum Buy Quantity | N/A |
| Weight | 1.735 |
| EAN | 0644075155731 |
| Product Group | B04311 |
| Internal Clearance | C0-Medium |
| Mounting Method | Shaft Mount |
| Rolling Element | Spherical Roller Bearing |
| Bore Profile | Straight |
| Cage Material | Polymer |
| Enclosure | Open |
| Number of Rows of Rollers | Single Row |
| Relubricatable | No |
| Withdrawal Sleeve | Not Applicable |
| Withdrawal Nut | Not Applicable |
| Inch - Metric | Metric |
| Long Description | 80MM Straight Bore; 140MM Outside Diameter; 26MM Width; C0-Medium Clearance; Shaft Mount; Single Row of Spherical Roller Bearings; Polymer Cage Material; Open |



NTK BEARING PRECISION AXLE CORP.

| | |
|------------------------|---|
| | Enclosure; Not Relubricatable |
| Category | Spherical Roller Bearing |
| UNSPSC | 31171510 |
| Harmonized Tariff Code | 84823040 |
| Noun | Bearing |
| Keyword String | Spherical |
| Manufacturer URL | http://www.consbrgs.com/ |
| Weight / LBS | 3.825 |
| Adapter Part Number | Not Applicable Inch Not Applicable Millimeter |
| B | 1.024 Inch 26 Millimeter |
| D | 5.512 Inch 140 Millimeter |
| d | 3.15 Inch 80 Millimeter |