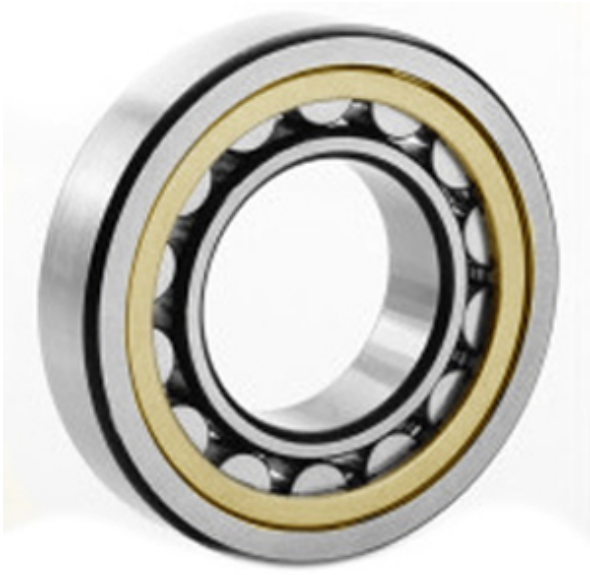




NTK BEARING PRECISION AXLE CORP.



1.378 Inch | 35 Millimeter x 2.835 Inch | 72
 Millimeter x 0.669 Inch | 17 Millimeter
CONSOLIDATED BEARING 20207-KM C/3
 Spherical Roller Bearings

Bearing No. 20207-KM C/3

20207-KM C/3 Bearing 2D drawings and 3D CAD models

Category	Spherical Roller Bearings
Inventory	0.0
Manufacturer Name	CONSOLIDATED BEARING
Minimum Buy Quantity	N/A
Weight	0.335
EAN	0644075155922
Product Group	B04311
Internal Clearance	C3-Loose
Mounting Method	Adapter Mount
Rolling Element	Spherical Roller Bearing
Bore Profile	Tapered
Cage Material	Bronze
Enclosure	Open
Number of Rows of Rollers	Single Row
Relubricatable	No
Adapter Part Number - Millimeter	H207 (Specify bore)
Inch - Metric	Metric
Long Description	35MM Tapered Bore; 72MM Outside Diameter; 17MM Width; C3-Loose Clearance; Adapter Mount; Single Row of Spherical Roller Bearings; Bronze Cage Material; Open Enclosure; Not



NTK BEARING PRECISION AXLE CORP.

	Relubricatable; Adapter Part
Other Features	Order adapter or withdrawal sleeve or nut separately. Others may be available
Category	Spherical Roller Bearing
UNSPSC	31171510
Harmonized Tariff Code	84823040
Noun	Bearing
Keyword String	Spherical
Manufacturer URL	http://www.consbrgs.com/
Weight / LBS	0.739
B	0.669 Inch 17 Millimeter
D	2.835 Inch 72 Millimeter
d	1.378 Inch 35 Millimeter