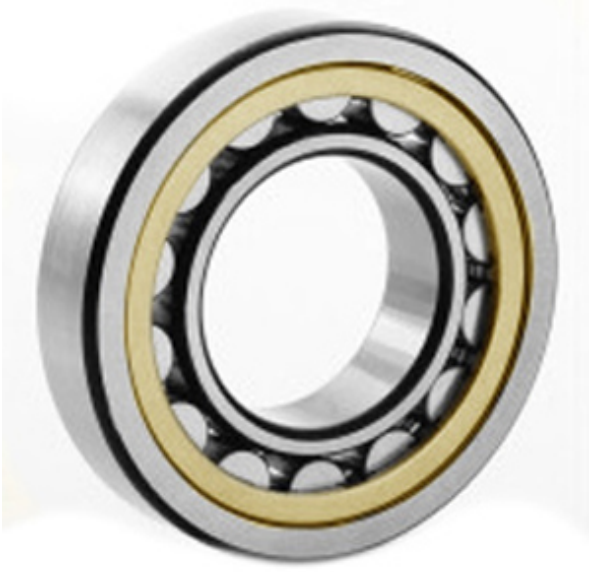




# NTK BEARING PRECISION AXLE CORP.



1.181 Inch | 30 Millimeter x 2.441 Inch | 62  
 Millimeter x 0.63 Inch | 16 Millimeter  
**CONSOLIDATED BEARING 20206-KM C/3**  
 Spherical Roller Bearings

Bearing No. 20206-KM C/3

20206-KM C/3 Bearing 2D drawings and 3D CAD models

Category	Spherical Roller Bearings
Inventory	0.0
Manufacturer Name	CONSOLIDATED BEARING
Minimum Buy Quantity	N/A
Weight	0.236
EAN	0644075155885
Product Group	B04311
Internal Clearance	C3-Loose
Mounting Method	Adapter Mount
Rolling Element	Spherical Roller Bearing
Bore Profile	Tapered
Cage Material	Bronze
Enclosure	Open
Number of Rows of Rollers	Single Row
Relubricatable	No
Inch - Metric	Metric
Long Description	30MM Tapered Bore; 62MM Outside Diameter; 16MM Width; C3-Loose Clearance; Adapter Mount; Single Row of Spherical Roller Bearings; Bronze Cage Material; Open Enclosure; Not Relubricatable; Adapter Part
Other Features	Order adapter or



## NTK BEARING PRECISION AXLE CORP.

	withdrawal sleeve or nut separately. Others may be available
Category	Spherical Roller Bearing
UNSPSC	31171510
Harmonized Tariff Code	84823040
Noun	Bearing
Keyword String	Spherical
Manufacturer URL	<a href="http://www.consbrgs.com/">http://www.consbrgs.com/</a>
Weight / LBS	0.52
Adapter Part Number	H206 (Specify bore) Inch   H206 (Specify bore) Millimeter
B	0.63 Inch   16 Millimeter
d	1.181 Inch   30 Millimeter
D	2.441 Inch   62 Millimeter