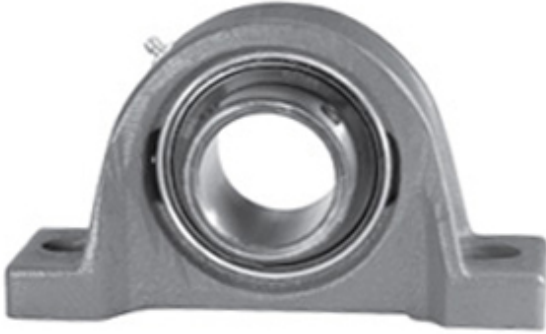




# NTK BEARING PRECISION AXLE CORP.

2.188 Inch | 55.575 Millimeter x 2.25 Inch | 57.15 Millimeter x 2.5 Inch | 63.5 Millimeter LINK BELT P3U235NZ38 Pillow Block Bearings



P3U235NZ38 Bearing 2D drawings and 3D CAD models

Bearing No. P3U235NZ38

Category	Pillow Block Bearings
Inventory	0.0
Manufacturer Name	REXNORD
Minimum Buy Quantity	N/A
Weight	3.54
EAN	0793699933444
Product Group	M06110
Number of Mounting Holes	2
Mounting Method	Set Screw
Housing Style	2 Bolt Pillow Block
Rolling Element	Ball Bearing
Housing Material	Cast Iron
Expansion / Non-expansion	Non-expansion
Mounting Bolts	5/8 Inch
Relubricatable	Yes
Insert Part Number	UG235NL
Seals	Single Lip Contact
Housing Configuration	1 Piece Solid
Inch - Metric	Inch
Other Features	Single Row   Standard Duty   Standard Backing   Wide Inner Race
Long Description	2 Bolt Pillow Block; 2-3/16" Bore; 2-1/2" Base to Center Height; Set Screw Mount; Ball Bearing; Relubricatable;



## NTK BEARING PRECISION AXLE CORP.

	Cast Iron; Single Lip Contact; Non-expansion
Category	Pillow Block
UNSPSC	31171511
Harmonized Tariff Code	8483.20.40.40
Noun	Bearing
Keyword String	Pillow Block
Manufacturer URL	<a href="http://www.rexnord.com">http://www.rexnord.com</a>
Manufacturer Item Number	P3U235NZ38
Manufacturer Internal Number	0193344
Weight / LBS	7.8
d	2.188 Inch   55.575 Millimeter
Bolt Spacing Minimum	0 Inch   0Millimeter
B	2.5 Inch   63.5 Millimeter
Actual Bolt Center to Center	6.8 Inch   171.5Millimeter
Bolt Spacing Maximum	0 Inch   0Millimeter
Nominal Bolt Center to Center	6.8 Inch   171.5 Millimeter
D	2.25 Inch   57.15 Millimeter