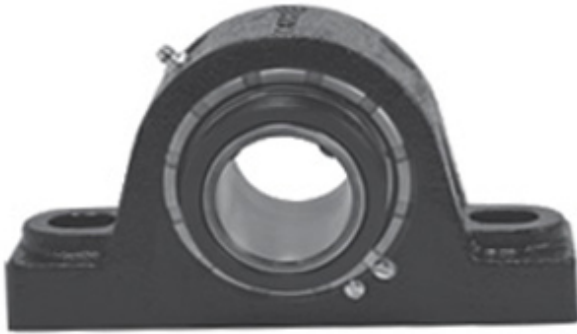




NTK BEARING PRECISION AXLE CORP.

1.438 Inch | 36.525 Millimeter x 2.875 Inch |
73.02 Millimeter x 1.875 Inch | 47.63 Millimeter
LINK BELT PEB22423H18Y Pillow Block Bearings



PEB22423H18Y Bearing 2D drawings and 3D CAD models

Bearing No. PEB22423H18Y

Category	Pillow Block Bearings
Inventory	0.0
Manufacturer Name	REXNORD
Minimum Buy Quantity	N/A
Weight	3.742
EAN	0793699515480
Product Group	M06288
Number of Mounting Holes	2
Mounting Method	Concentric Collar
Housing Style	2 Bolt Pillow Block
Rolling Element	Spherical Roller Bearing
Housing Material	Cast Iron
Expansion / Non-expansion	Expansion
Mounting Bolts	1/2 Inch
Relubricatable	Yes
Insert Part Number	B22423HL
Seals	Floating Labyrinth
Housing Configuration	1 Piece Solid
Inch - Metric	Inch
Other Features	Double Row Single Collar Extended Inner Race With Set Screw
Long Description	2 Bolt Pillow Block; 1-7/16" Bore; 1-7/8" Base to Center Height; Concentric Collar Mount; Spherical Roller



NTK BEARING PRECISION AXLE CORP.

	Bearing; Relubricatable; Cast Iron; Floating Labyrinth; Expansion
Category	Pillow Block
UNSPSC	31171511
Harmonized Tariff Code	8483.20.40.80
Noun	Bearing
Keyword String	Pillow Block
Manufacturer URL	http://www.rexnord.com
Manufacturer Item Number	PEB22423H18Y
Manufacturer Internal Number	0151548
Weight / LBS	7
B	1.875 Inch 47.63 Millimeter
d	1.438 Inch 36.525 Millimeter
Actual Bolt Center to Center	5 Inch 127Millimeter
D	2.875 Inch 73.02 Millimeter
Nominal Bolt Center to Center	5.3 Inch 133.5 Millimeter
Bolt Spacing Minimum	0 Inch 0Millimeter
Bolt Spacing Maximum	0 Inch 0Millimeter