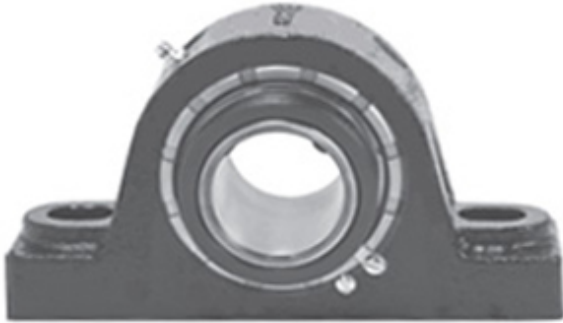




NTK BEARING PRECISION AXLE CORP.

1.438 Inch | 36.525 Millimeter x 2.71 Inch |
68.834 Millimeter x 1.875 Inch | 47.63 Millimeter
LINK BELT PB22623E7 Pillow Block Bearings



Bearing No. PB22623E7

PB22623E7 Bearing 2D drawings and 3D CAD models

Category	Pillow Block Bearings
Inventory	0.0
Manufacturer Name	REXNORD
Minimum Buy Quantity	N/A
Weight	2.948
EAN	0793699541304
Product Group	M06288
Number of Mounting Holes	2
Mounting Method	Tapered Adapter Sleeve
Housing Style	2 Bolt Pillow Block
Rolling Element	Spherical Roller Bearing
Housing Material	Cast Iron
Expansion / Non-expansion	Non-expansion
Mounting Bolts	1/2 Inch
Relubricatable	Yes
Insert Part Number	B22623E7L
Seals	Triple Lip Contact
Housing Configuration	1 Piece Solid
Inch - Metric	Inch
Other Features	Double Row Extended Inner Race
Long Description	2 Bolt Pillow Block; 1-7/16" Bore; 1-7/8" Base to Center Height; Tapered Adapter Sleeve Mount; Spherical Roller Bearing;



NTK BEARING PRECISION AXLE CORP.

	Relubricatable; Cast Iron; Triple Lip Contact; Non- expansion
Category	Pillow Block
UNSPSC	31171511
Harmonized Tariff Code	8483.20.40.80
Noun	Bearing
Keyword String	Pillow Block
Manufacturer URL	http://www.rexnord.com
Manufacturer Item Number	PB22623E7
Manufacturer Internal Number	0154130
Weight / LBS	7
Bolt Spacing Minimum	0 Inch 0Millimeter
Nominal Bolt Center to Center	5.3 Inch 133.5 Millimeter
D	2.71 Inch 68.834 Millimeter
Actual Bolt Center to Center	5 Inch 127Millimeter
d	1.438 Inch 36.525 Millimeter
B	1.875 Inch 47.63 Millimeter
Bolt Spacing Maximum	0 Inch 0Millimeter