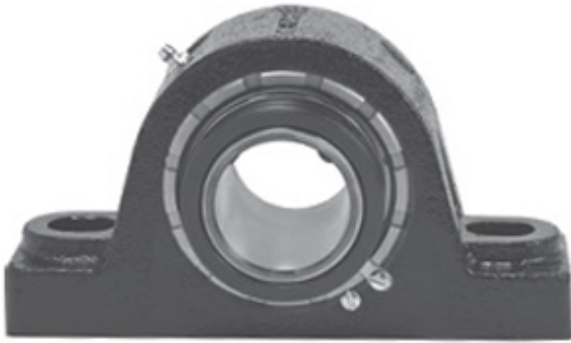




# NTK BEARING PRECISION AXLE CORP.

3.438 Inch | 87.325 Millimeter x 4.375 Inch |  
111.13 Millimeter x 3.75 Inch | 95.25 Millimeter  
LINK BELT PKEB22455H Pillow Block Bearings



Bearing No. PKEB22455H

PKEB22455H Bearing 2D drawings and 3D CAD models

Category	Pillow Block Bearings
Inventory	0.0
Manufacturer Name	REXNORD
Minimum Buy Quantity	N/A
Weight	19.52
EAN	0662327115401
Product Group	M06288
Number of Mounting Holes	2
Mounting Method	Concentric Collar
Housing Style	2 Bolt Pillow Block
Rolling Element	Spherical Roller Bearing
Housing Material	Cast Steel
Expansion / Non-expansion	Expansion
Mounting Bolts	7/8 Inch
Relubricatable	Yes
Insert Part Number	B22455HL
Seals	Floating Labyrinth
Housing Configuration	1 Piece Solid
Inch - Metric	Inch
Other Features	Double Row   Single Collar   Extended Inner Race   With Set Screw
Long Description	2 Bolt Pillow Block; 3-7/16" Bore; 3-3/4" Base to Center Height; Concentric Collar Mount; Spherical Roller



## NTK BEARING PRECISION AXLE CORP.

	Bearing; Relubricatable; Cast Steel; Floating Labyrinth; Expansion
Category	Pillow Block
UNSPSC	31171511
Harmonized Tariff Code	8483.20.40.80
Noun	Bearing
Keyword String	Pillow Block
Manufacturer URL	<a href="http://www.rexnord.com">http://www.rexnord.com</a>
Manufacturer Item Number	PKEB22455H
Manufacturer Internal Number	5811540
Weight / LBS	43
B	3.75 Inch   95.25 Millimeter
Nominal Bolt Center to Center	10 Inch   254 Millimeter
Actual Bolt Center to Center	10 Inch   254 Millimeter
d	3.438 Inch   87.325 Millimeter
Bolt Spacing Minimum	0 Inch   0 Millimeter
D	4.375 Inch   111.13 Millimeter
Bolt Spacing Maximum	0 Inch   0 Millimeter