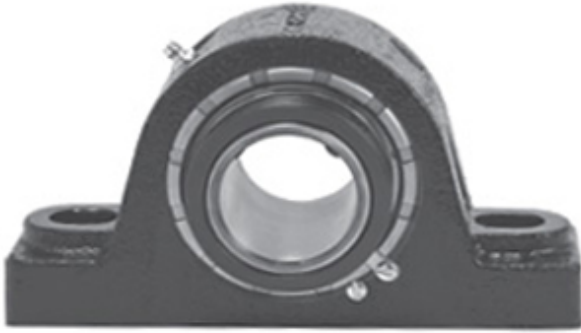




NTK BEARING PRECISION AXLE CORP.

3.188 Inch | 80.975 Millimeter x 4.375 Inch |
111.13 Millimeter x 3.75 Inch | 95.25 Millimeter
LINK BELT PKB22451E7 Pillow Block Bearings



Bearing No. PKB22451E7

PKB22451E7 Bearing 2D drawings and 3D CAD models

Category	Pillow Block Bearings
Inventory	0.0
Manufacturer Name	REXNORD
Minimum Buy Quantity	N/A
Weight	20.43
EAN	0793699552638
Product Group	M06288
Number of Mounting Holes	2
Mounting Method	Concentric Collar
Housing Style	2 Bolt Pillow Block
Rolling Element	Spherical Roller Bearing
Housing Material	Cast Steel
Expansion / Non-expansion	Non-expansion
Mounting Bolts	7/8 Inch
Relubricatable	Yes
Insert Part Number	B22451E7L
Seals	Triple Lip Contact
Housing Configuration	1 Piece Solid
Inch - Metric	Inch
Other Features	Double Row Single Collar Extended Inner Race With Set Screw
Long Description	2 Bolt Pillow Block; 3-3/16" Bore; 3-3/4" Base to Center Height; Concentric Collar Mount; Spherical Roller



NTK BEARING PRECISION AXLE CORP.

	Bearing; Relubricatable; Cast Steel; Triple Lip Contact; Non-expansion
Category	Pillow Block
UNSPSC	31171511
Harmonized Tariff Code	8483.20.40.80
Noun	Bearing
Keyword String	Pillow Block
Manufacturer URL	http://www.rexnord.com
Manufacturer Item Number	PKB22451E7
Manufacturer Internal Number	0155263
Weight / LBS	45
D	4.375 Inch 111.13 Millimeter
Bolt Spacing Maximum	0 Inch 0Millimeter
B	3.75 Inch 95.25 Millimeter
Bolt Spacing Minimum	0 Inch 0Millimeter
Nominal Bolt Center to Center	10 Inch 254 Millimeter
d	3.188 Inch 80.975 Millimeter
Actual Bolt Center to Center	10 Inch 254Millimeter