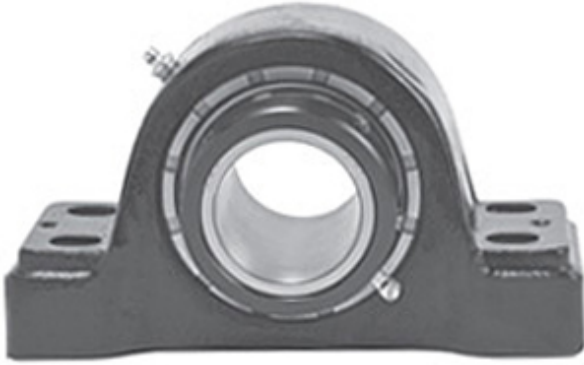




NTK BEARING PRECISION AXLE CORP.

2.25 Inch | 57.15 Millimeter x 3.313 Inch | 84.14 Millimeter x 2.5 Inch | 63.5 Millimeter LINK BELT PKB22436FE7 Pillow Block Bearings



PKB22436FE7 Bearing 2D drawings and 3D CAD models

Bearing No. PKB22436FE7

Category	Pillow Block Bearings
Inventory	0.0
Manufacturer Name	REXNORD
Minimum Buy Quantity	N/A
Weight	7.26
EAN	0793699552492
Product Group	M06288
Number of Mounting Holes	4
Mounting Method	Concentric Collar
Housing Style	4 Bolt Pillow Block
Rolling Element	Spherical Roller Bearing
Housing Material	Cast Steel
Expansion / Non-expansion	Non-expansion
Mounting Bolts	1/2 Inch
Relubricatable	Yes
Insert Part Number	B22436E7L
Seals	Triple Lip Contact
Housing Configuration	1 Piece Solid
Inch - Metric	Inch
Other Features	Double Row Single Collar Extended Inner Race With Set Screw
Long Description	4 Bolt Pillow Block; 2-1/4" Bore; 2-1/2" Base to Center Height; Concentric Collar Mount; Spherical Roller



NTK BEARING PRECISION AXLE CORP.

	Bearing; Relubricatable; Cast Steel; Triple Lip Contact; Non-expansion
Category	Pillow Block
UNSPSC	31171511
Harmonized Tariff Code	8483.20.40.80
Noun	Bearing
Keyword String	Pillow Block
Manufacturer URL	http://www.rexnord.com
Manufacturer Item Number	PKB22436FE7
Manufacturer Internal Number	0155249
Weight / LBS	16
d	2.25 Inch 57.15 Millimeter
D	3.313 Inch 84.14 Millimeter
Bolt Spacing Maximum	0 Inch 0Millimeter
Bolt Spacing Minimum	0 Inch 0Millimeter
B	2.5 Inch 63.5 Millimeter
Actual Bolt Center to Center	6.8 Inch 171.5Millimeter
Nominal Bolt Center to Center	6.8 Inch 171.5 Millimeter