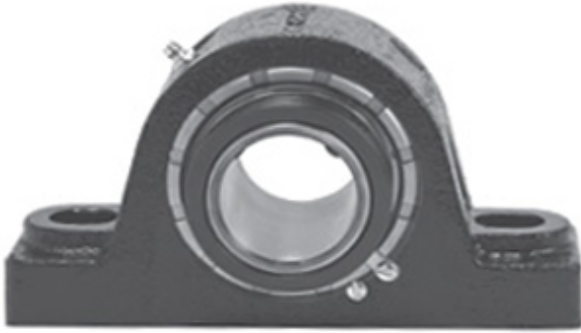




NTK BEARING PRECISION AXLE CORP.

3.938 Inch | 100.025 Millimeter x 4.94 Inch |
125.476 Millimeter x 4.25 Inch | 107.95 Millimeter
LINK BELT PKB22663E7 Pillow Block Bearings



Bearing No. PKB22663E7

PKB22663E7 Bearing 2D drawings and 3D CAD models

Category	Pillow Block Bearings
Inventory	0.0
Manufacturer Name	REXNORD
Minimum Buy Quantity	N/A
Weight	28.15
EAN	0793699553086
Product Group	M06288
Number of Mounting Holes	2
Mounting Method	Tapered Adapter Sleeve
Housing Style	2 Bolt Pillow Block
Rolling Element	Spherical Roller Bearing
Housing Material	Cast Steel
Expansion / Non-expansion	Non-expansion
Mounting Bolts	1 Inch
Relubricatable	Yes
Insert Part Number	B22663E7L
Seals	Triple Lip Contact
Housing Configuration	1 Piece Solid
Inch - Metric	Inch
Other Features	Double Row Extended Inner Race
Long Description	2 Bolt Pillow Block; 3-15/16" Bore; 4-1/4" Base to Center Height; Tapered Adapter Sleeve Mount; Spherical Roller Bearing;



NTK BEARING PRECISION AXLE CORP.

	Relubricatable; Cast Steel; Triple Lip Contact; Non- expansion
Category	Pillow Block
UNSPSC	31171511
Harmonized Tariff Code	8483.20.40.80
Noun	Bearing
Keyword String	Pillow Block
Manufacturer URL	http://www.rexnord.com
Manufacturer Item Number	PKB22663E7
Manufacturer Internal Number	0155308
Weight / LBS	62
Nominal Bolt Center to Center	11.3 Inch 287 Millimeter
Bolt Spacing Minimum	0 Inch 0Millimeter
D	4.94 Inch 125.476 Millimeter
Bolt Spacing Maximum	0 Inch 0Millimeter
Actual Bolt Center to Center	11.8 Inch 300Millimeter
B	4.25 Inch 107.95 Millimeter
d	3.938 Inch 100.025 Millimeter