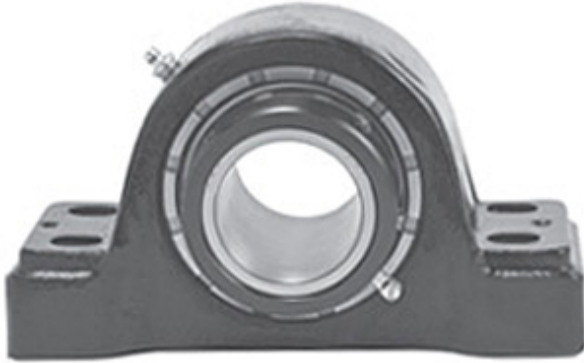




NTK BEARING PRECISION AXLE CORP.

2.938 Inch | 74.625 Millimeter x 3.86 Inch |
98.044 Millimeter x 3.25 Inch | 82.55 Millimeter
LINK BELT PKB22647FE7 Pillow Block Bearings



PKB22647FE7 Bearing 2D drawings and 3D CAD models

Bearing No. PKB22647FE7

Category	Pillow Block Bearings
Inventory	0.0
Manufacturer Name	REXNORD
Minimum Buy Quantity	N/A
Weight	13.17
EAN	0793699553048
Product Group	M06288
Number of Mounting Holes	4
Mounting Method	Tapered Adapter Sleeve
Housing Style	4 Bolt Pillow Block
Rolling Element	Spherical Roller Bearing
Housing Material	Cast Steel
Expansion / Non-expansion	Non-expansion
Mounting Bolts	5/8 Inch
Relubricatable	Yes
Insert Part Number	B22647E7L
Seals	Triple Lip Contact
Housing Configuration	1 Piece Solid
Inch - Metric	Inch
Other Features	Double Row Extended Inner Race
Long Description	4 Bolt Pillow Block; 2-15/16" Bore; 3-1/4" Base to Center Height; Tapered Adapter Sleeve Mount; Spherical Roller Bearing;



NTK BEARING PRECISION AXLE CORP.

	Relubricatable; Cast Steel; Triple Lip Contact; Non- expansion
Category	Pillow Block
UNSPSC	31171511
Harmonized Tariff Code	8483.20.40.80
Noun	Bearing
Keyword String	Pillow Block
Manufacturer URL	http://www.rexnord.com
Manufacturer Item Number	PKB22647FE7
Manufacturer Internal Number	0155304
Weight / LBS	29
Bolt Spacing Minimum	0 Inch 0Millimeter
d	2.938 Inch 74.625 Millimeter
B	3.25 Inch 82.55 Millimeter
Actual Bolt Center to Center	8.1 Inch 206Millimeter
Nominal Bolt Center to Center	8.1 Inch 206.4 Millimeter
Bolt Spacing Maximum	0 Inch 0Millimeter
D	3.86 Inch 98.044 Millimeter