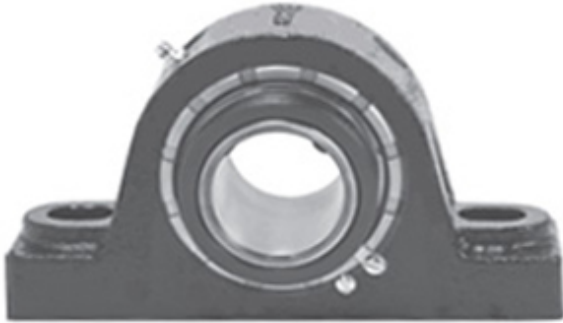




NTK BEARING PRECISION AXLE CORP.

1.938 Inch | 49.225 Millimeter x 3.813 Inch |
96.84 Millimeter x 2.5 Inch | 63.5 Millimeter LINK
BELT PB22531E Pillow Block Bearings



Bearing No. PB22531E

PB22531E Bearing 2D drawings and 3D CAD models

Category	Pillow Block Bearings
Inventory	0.0
Manufacturer Name	REXNORD
Minimum Buy Quantity	N/A
Weight	6.36
EAN	0662327110710
Product Group	M06288
Number of Mounting Holes	2
Mounting Method	Concentric Collar
Housing Style	2 Bolt Pillow Block
Rolling Element	Spherical Roller Bearing
Housing Material	Cast Iron
Expansion / Non-expansion	Non-expansion
Mounting Bolts	5/8 Inch
Relubricatable	Yes
Insert Part Number	B22531EL
Seals	Spring Loaded Lip
Housing Configuration	1 Piece Solid
Inch - Metric	Inch
Other Features	Double Row Double Collar Extended Inner Race With Set Screw
Long Description	2 Bolt Pillow Block; 1-15/16" Bore; 2-1/2" Base to Center Height; Concentric Collar Mount;



NTK BEARING PRECISION AXLE CORP.

	Spherical Roller Bearing; Relubricatable; Cast Iron; Spring Loaded Lip; Non- expansion
Category	Pillow Block
UNSPSC	31171511
Harmonized Tariff Code	8483.20.40.80
Noun	Bearing
Keyword String	Pillow Block
Manufacturer URL	http://www.rexnord.com
Manufacturer Item Number	PB22531E
Manufacturer Internal Number	5811071
Weight / LBS	14
Actual Bolt Center to Center	7 Inch 178Millimeter
B	2.5 Inch 63.5 Millimeter
Bolt Spacing Maximum	0 Inch 0Millimeter
D	3.813 Inch 96.84 Millimeter
d	1.938 Inch 49.225 Millimeter
Nominal Bolt Center to Center	7 Inch 177.8 Millimeter
Bolt Spacing Minimum	0 Inch 0Millimeter