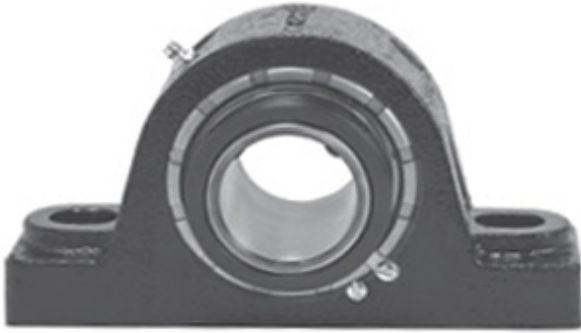




NTK BEARING PRECISION AXLE CORP.

1.938 Inch | 49.225 Millimeter x 3.08 Inch |
78.232 Millimeter x 2.25 Inch | 57.15 Millimeter
LINK BELT PKB22631H Pillow Block Bearings



Bearing No. PKB22631H

PKB22631H Bearing 2D drawings and 3D CAD models

Category	Pillow Block Bearings
Inventory	0.0
Manufacturer Name	REXNORD
Minimum Buy Quantity	N/A
Weight	5.45
EAN	0793699060133
Product Group	M06288
Number of Mounting Holes	2
Mounting Method	Tapered Adapter Sleeve
Housing Style	2 Bolt Pillow Block
Rolling Element	Spherical Roller Bearing
Housing Material	Cast Steel
Expansion / Non-expansion	Non-expansion
Mounting Bolts	5/8 Inch
Relubricatable	Yes
Insert Part Number	B22631HL
Seals	Floating Labyrinth
Housing Configuration	1 Piece Solid
Inch - Metric	Inch
Other Features	Double Row Extended Inner Race
Long Description	2 Bolt Pillow Block; 1-15/16" Bore; 2-1/4" Base to Center Height; Tapered Adapter Sleeve Mount; Spherical Roller Bearing;



NTK BEARING PRECISION AXLE CORP.

	Relubricatable; Cast Steel; Floating Labyrinth; Non- expansion
Category	Pillow Block
UNSPSC	31171511
Harmonized Tariff Code	8483.20.40.80
Noun	Bearing
Keyword String	Pillow Block
Manufacturer URL	http://www.rexnord.com
Manufacturer Item Number	PKB22631H
Manufacturer Internal Number	5806013
Weight / LBS	12
d	1.938 Inch 49.225 Millimeter
B	2.25 Inch 57.15 Millimeter
D	3.08 Inch 78.232 Millimeter
Actual Bolt Center to Center	6.3 Inch 159Millimeter
Bolt Spacing Minimum	0 Inch 0Millimeter
Bolt Spacing Maximum	0 Inch 0Millimeter
Nominal Bolt Center to Center	6.3 Inch 160 Millimeter