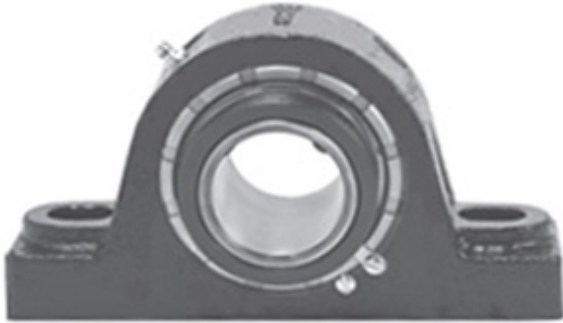




NTK BEARING PRECISION AXLE CORP.

1.438 Inch | 36.525 Millimeter x 3.563 Inch | 90.5 Millimeter x 2.125 Inch | 53.98 Millimeter LINK BELT PB22523E7 Pillow Block Bearings



Bearing No. PB22523E7

PB22523E7 Bearing 2D drawings and 3D CAD models

Category	Pillow Block Bearings
Inventory	0.0
Manufacturer Name	REXNORD
Minimum Buy Quantity	N/A
Weight	4.536
EAN	0793699540970
Product Group	M06288
Number of Mounting Holes	2
Mounting Method	Concentric Collar
Housing Style	2 Bolt Pillow Block
Rolling Element	Spherical Roller Bearing
Housing Material	Cast Iron
Expansion / Non-expansion	Non-expansion
Mounting Bolts	1/2 Inch
Relubricatable	Yes
Insert Part Number	B22523E7L
Seals	Triple Lip Contact
Housing Configuration	1 Piece Solid
Inch - Metric	Inch
Other Features	Double Row Double Collar Extended Inner Race With Set Screw
Long Description	2 Bolt Pillow Block; 1-7/16" Bore; 2-1/8" Base to Center Height; Concentric Collar Mount; Spherical Roller



NTK BEARING PRECISION AXLE CORP.

	Bearing; Relubricatable; Cast Iron; Triple Lip Contact; Non-expansion
Category	Pillow Block
UNSPSC	31171511
Harmonized Tariff Code	8483.20.40.80
Noun	Bearing
Keyword String	Pillow Block
Manufacturer URL	http://www.rexnord.com
Manufacturer Item Number	PB22523E7
Manufacturer Internal Number	0154097
Weight / LBS	10
d	1.438 Inch 36.525 Millimeter
Bolt Spacing Maximum	0 Inch 0Millimeter
B	2.125 Inch 53.98 Millimeter
Nominal Bolt Center to Center	5.9 Inch 150 Millimeter
Actual Bolt Center to Center	5.9 Inch 149.9Millimeter
D	3.563 Inch 90.5 Millimeter
Bolt Spacing Minimum	0 Inch 0Millimeter